



LED
NEON FLEX
N2-4



Features

- Color options: Single color ;
- Adopt anti-static lamp beads;
- Side bending and easy to shape;
- Tricolor silicone integrated extrusion shaping process;
- Adopt high quality components, with stable and reliable performance;
- 15m single feed with same brightness from end to end;
- Good weather resistance;
- Warranty: 5 years indoors, 3 years outdoors;
- Various specifications are available, support customization;



Optical & Electrical Parameters

Model No.	Voltage	Beam Angle	CRI	Color	Lm/m	Lm/W	Rated Power
N2-4-Single color	24V DC	180°	>90 /	□ 6000K	603	58	9.84 W/m
				■ Red	158	15	
				■ Green	145	14	
				■ Blue	25	2	
				■ Yellow	138	13	
				■ Orange	243	23	

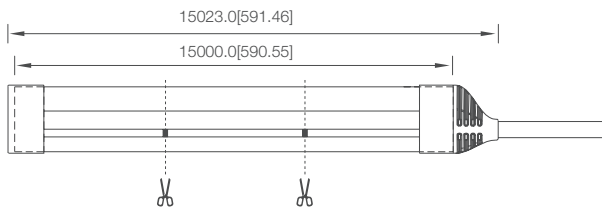
Other Parameters

Model No.	LED QTY (pcs/m)	Standard Run	Min. Cuttable Length	Working Temperature	Storage Temperature
N2-4-Single color	120	15000.0mm	50.0mm	-20~+60°C	-20~+70°C

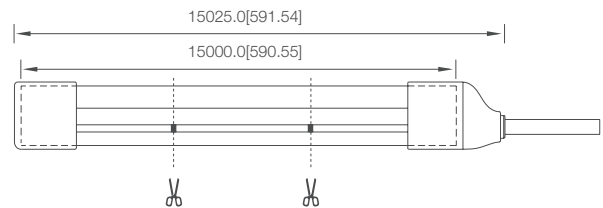
Profile Drawings

Unit: mm[inch]

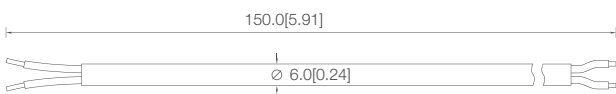
Glue Process (IP67)



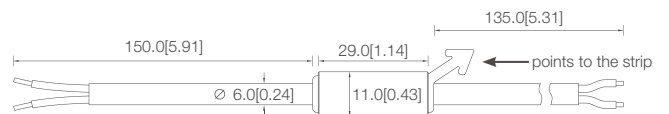
Molding Press (IP68)



General wire



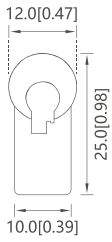
Wire with anti-wicking ferrule



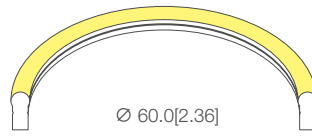
Notes:

- Either of the above wires can be selected.
- Wires with 2/3/4/5 cores are all available.
- The wire length support customization.
- The anti-wicking ferrule needs to be above water for any underwater applications. Do not disassemble or reprocess the ferrule, otherwise, we will not be responsible for the consequences.

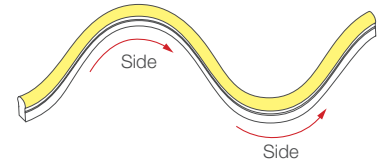
Sectional view



Bending Diameter

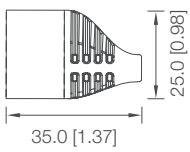


Bending Direction

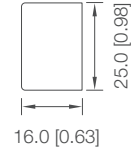


Glue Process

Front cap

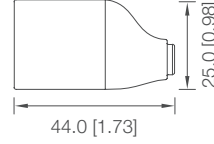


Closing End-cap

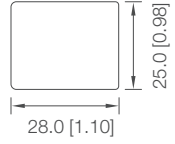


Molding Pressed

Front cap



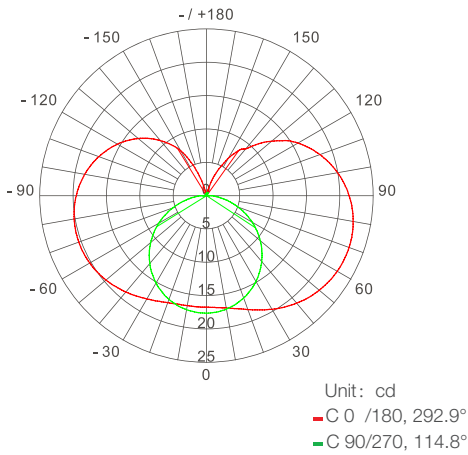
Closing End-cap



Remarks: support customization within 15m.

Luminous Intensity Distribution Diagram

Average Illumination



Flux Out: 31.05lm

Height	Eavg, Emax	Beam Angle: 90.00°	Diameter
0.5m	39.54,70.84lx		100.00cm
1.0m	9.884,17.71lx		200.00cm
1.5m	4.393,7.871lx		300.00cm
2.0m	2.471,4.427lx		400.00cm
2.5m	1.581,2.834lx		500.00cm
3.0m	1.098,1.968lx		600.00cm
3.5m	0.8069,1.446lx		700.00cm
4.0m	0.6178,1.107lx		800.00cm
4.5m	0.4881,0.8745lx		900.00cm
5.0m	0.3954,0.7084lx		1000.00cm

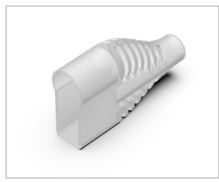
Note: above data tested with N2-4 red color, for other data, please consult sales rep.

Recommended power supply upon working length

N2-4

Working Length	Measured Current	Rated Voltage	Measured Power	Recommended Power Supply	Power Supply Mode
1m	0.42 A	24V DC	10.24 W	15 W	Single Feed
15m	6.21 A	24V DC	149.1 W	190 W	Single Feed

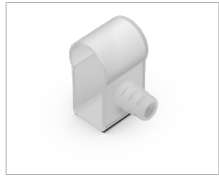
Product accessories



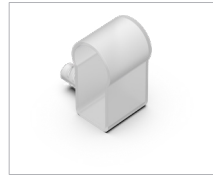
--
Item: Front cap
Dimensions L*W*H: --
Quantity (15m): --
Free/Optional Free



--
Item: Closing End-cap
Dimensions L*W*H: --
Quantity (15m): --
Free/Optional Free



--
Item: Front cap (Right)
Dimensions L*W*H: --
Quantity (15m): --
Free/Optional Optional



--
Item: Front cap (Left)
Dimensions L*W*H: --
Quantity (15m): --
Free/Optional Optional



--
Item: Front cap (bottom)
Dimensions L*W*H: --
Quantity (15m): --
Free/Optional Optional



--
Item: Installation set
Dimensions L*W*H: --
Quantity (15m): --
Free/Optional Optional



--
Item: Aluminum channel
Dimensions L*W*H: --
Quantity (15m): --
Free/Optional Optional

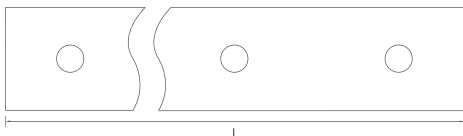


WR-7516
Item: Silicone Glue
Dimensions: 45g/pc
Quantity (15m): --
Free/Optional Optional



PA3
Item: Screws
Dimensions L*W*H: PA3*10
Quantity (15m): --
Free/Optional Optional

Aluminum channel diagram

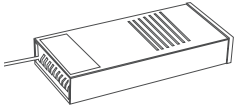


Name	L(mm)	W(mm)	Type
Aluminum clip	25	12.3	Optional
Aluminum channel	1000	12.3	Optional
Aluminum channel X	X	--	Customized

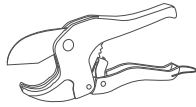
Note:

The number of accessories can be increased according needs;
Processing the molded cap needs corresponding molds and molding equipment;
If customer processes the molded cap themselves, we will not be responsible for the consequences.;

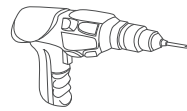
Products and Tools



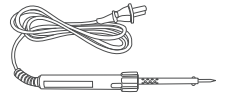
LED power supply



Cutter



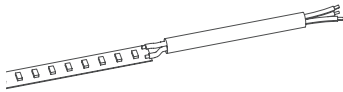
Electric drill



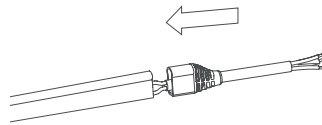
Electric iron

Installation

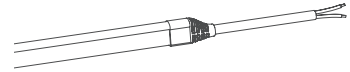
Front cap installation



Weld the wire to the PCB board.

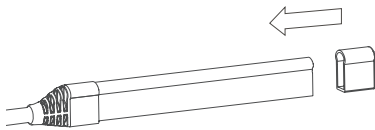


Apply waterproof glue to the end cap, then install the cap.

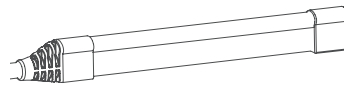


Wipe off the excess glue and wait for the glue to solidify.

Closing-end cap installation

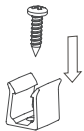


Apply waterproof glue to the end cap, then install the cap.

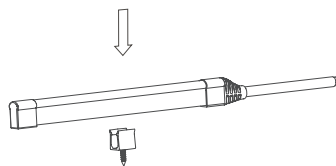


Wipe off the excess glue and wait for the glue to solidify.

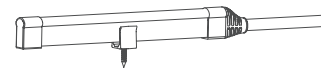
Plastic clip installation



Fix the clip with screws



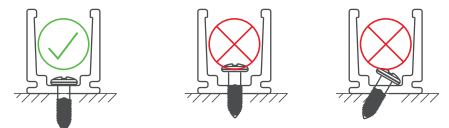
Put the strip into the clip



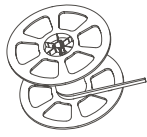
Finished

Note:

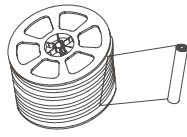
- At the welding place, please pay attention to the positive and negative poles of the wire and the strip;
- Each connection must use 10g silica gel for waterproof and insulating treatment;
- The screws must be vertical to the mounting surface and be fastened, as shown in the figure on the right;
- Please choose suitable operation steps according to the actual needs;
- During mounting, please pay attention to the min bending diameter, and best to use original factory accessories;
- More information, please feel free to consult us;



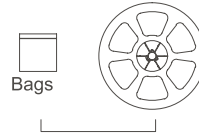
Packaging Information



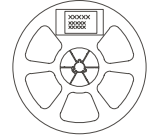
Roll the product to a reel



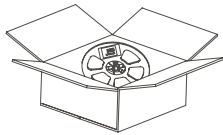
Wrap the reel with PE film



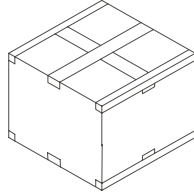
Put the reel and accessories bag on the work table



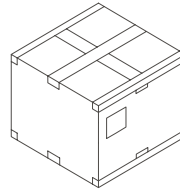
Label the reel;



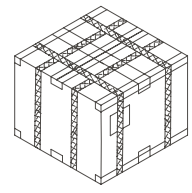
Put the prepared products into a carton box;



Seal the carton box;



Label the carton box;

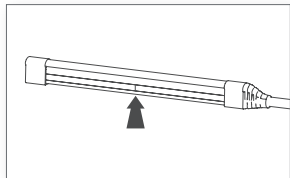


Use packing belt to pack. Add edge protectors if necessary

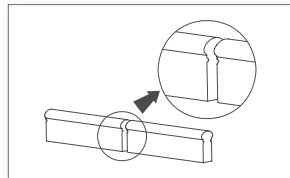
Model No.	Product Size (mm)	Carton Size (mm)	Meter/Reel	Reel/Carton	Net Weight (kg)	Gross Weight (kg)
N2-4	15000*10*25	390*390*325	15	3	/(1±10%)	14.90 (1± 10%)

- 15m per reel, and the reel is packed in a carton box.
- For other customized length packaging, please ask our sales rep.
- The above-mentioned packaging quantity and weight are only for the illustrated packaging method. For other packaging methods, the packaging quantity and weight will be different. The actual weight is subject to the actual product.

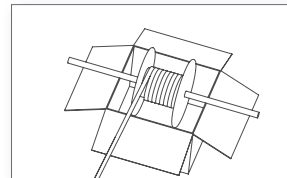
Warning Mark



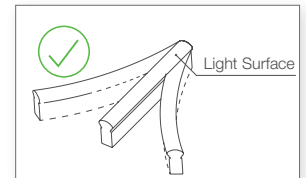
Cuttable identifier



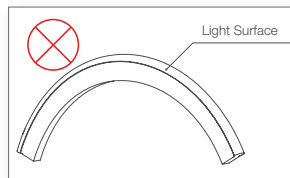
Neat and smooth cut



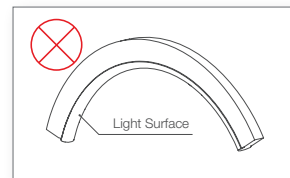
Insert a stick on the reel and place it on the packing box, and rotate the reel to get the product.



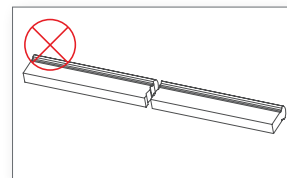
Side bending



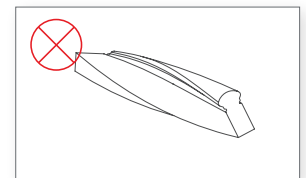
use in convex direction



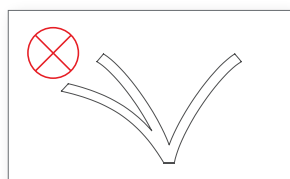
use in concave direction



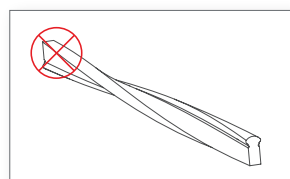
Do not make irregular cuts.



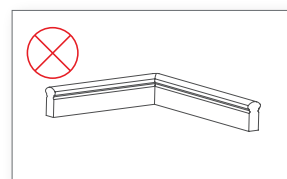
Do not use in distortions



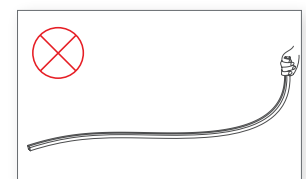
Do not bend many times, for it can endanger electronic lines.



Do not use on wringing (twist)



Do not bend at right angles



Do not throw or pull when taking products

- Note:
1. There are cutting marks on the FPCB;
 2. Please pay attention to the above warnings during transportation and mounting;

Warning

- Do not disassemble or retrofit the light. Do not touch the surface of the light with a sharp object.
- Do not do live-line working during installation, especially for high voltage product.
- Do not use any organic chemical solvents.
- Use neutral glass adhesive to fix this product and it needs to be dried 4 hours in the open environment after operation.
- Treat the ends and the circuit connection points that are not connected to the main line with insulation, waterproof, and anti-corrosion in the installation.
- Use 18AWG (0.75mm² cross-sectional area) or thicker core wire to avoid adverse consequences caused by overheating, if the power cable need to lengthen.
- Make sure the input voltage meets the requirements and lines are connected correctly before lighting on
- This product is for signage, and do not use as general lighting.
- Series connection within the max run.
- The length of the power cable between the power supply and the led strip should not exceed 2 meters. Otherwise, large circuit loss will lead to inconsistent brightness.
- Installation, maintenance and repair should be operated by a qualified technician.

Attentions before installation

- Before installation, check that the product parameters are consistent with the requirements (Seeing product specifications or product labels)
- Load voltage, current, power and power supply should be matched with the product.
- Follow the instructions of wiring diagram (first connect the load and then the power supply) to avoid short circuit
- Make sure the correct connection of positive and negative poles between products and power supply. Otherwise, the light will not be on.
- Make sure the power cord firmly screwed into the terminal and it should not be pulled out by hands.
- The terminal should have waterproof and anti-corrosive treatment.

Statements and Recycling

Packaging information

- Repair should be operated by a qualified technician or supplier, if the external circuit or main line of this product is damaged.
- The parameters given in this manual are typical values and for reference only
- All illustrations and drawings in this manual are for reference.
- This product is subject to change without notice.

Recycling

- LED lighting products belongs to electronic products, please do recycling treatment according to the relevant WEEE directives.

BLUEVIEW ELEC-OPTIC TECH CO.,LTD

Tel: +86-28-8148 0011
 Fax: +86-28-8148 1258

Web.: www.blueviewled.com
 Email: sales@blueviewled.com

Add.: No. 1000, Section 2, Konggang 2nd Road, Shuangliu, Chengdu 610207, Sichuan, CHINA